



RAJ BHOOMI ENGINEERS

Your Connecting Link in the
GLOBAL STEEL SOURCING NETWORK

● PLATES ● FITTINGS ● FLANGES ● PIPES

www.rajbhoomi.com



COMPANY PROFILE

Raj Bhoomi Engineers take the pleasure to introduce ourselves as one of the largest manufacturers, exporters, stockists and suppliers of the following materials : Plates, Fittings, Flanges, Pipes & Coils confirming to TP-304, 304L, 309, 310, 310s, 316, 316L, 316S, 316Ti, 321, 904L, Carbon Steel, Alloy Steel, Nickle, Monel, Inconel, Titanium, other high Nickel alloy grades, Abrasion & Wear resistant Plates etc.

We are regularly supplying these products to many core sector industries such as Oil & Gas, Petrochemicals, Chemical industries, Power plants, Fertilizer companies, Refineries, Paper mills, Cement plants, Sugar mills, etc.

As we are regularly maintaining bulk stock in every item, we can arrange supplies in time and that too at the most competitive rates. With an experience of more than two decades, we have gained expertise and understanding of this industry and have set benchmarks for others to follow in this field.

VISION

Putting best of our efforts to outperform customer expectations every time to achieve Total Customer Satisfaction through continuous innovation, world class manufacturing practices & Quality management that exceeds customer expectations.

MISSION

To be on a committed mission to make Radisson Impex a professionally managed company within the domain expertise and a respected Indian conglomerate with significant Global presence .

WHY US

- Deliver best quality products for all your needs of Plates, Fittings, Flanges, Plates & Pipes on time every time.
- One stop shop for all steel raw materials Each of our department right from Vendor Evaluation Procurement, Production, Inventory, Sales and Services are Fully committed to offer the best product quality and prompt services to our Clients.



FAST RESPONSE

Fast response with submission of quotations, all products supplied with necessary documents.



FLEXIBLE LOGISTICS

Freight packages tailored to the customer requirements.



COMPLETE PIPING SOLUTIONS

Good industry knowledge and experience, with an extensive support network of Approved manufacturers from across the Globe.



NO HIDDEN CHARGES

Fixed prices on all offers from order placement until delivery of material to site.



PLATES

ALLOY STEEL PLATES

Alloy steel plates are defined as steel plates with a definite range or definite minimum quantity of additional elements, depending on the alloy. Common alloying elements like Aluminum, Boron, Cobalt, Molybdenum, Nickel, Titanium, Tungsten, Vanadium Zirconium etc.

As plates, these include strength, hardness, toughness, wear resistance and corrosion resistance. Many of the alloy steels are easy to machine, stamp and fabricate and can be manufactured to precise tolerances.



ASTM SA387 GRADE 5 Class 1
ASTM SA387 GRADE 9 Class 1
ASTM SA387 GRADE 11 Class 1
ASTM SA387 GRADE 12 Class 1
ASTM SA387 GRADE 22 Class 1
ASTM SA387 GRADE 91 Class 1

ASTM SA387 GRADE 5 Class 2
ASTM SA387 GRADE 9 Class 2
ASTM SA387 GRADE 11 Class 2
ASTM SA387 GRADE 12 Class 2
ASTM SA387 GRADE 22 Class 2
ASTM SA387 GRADE 91 Class 2
16MO3 / 204 GR B

STAINLESS STEEL PLATES

Raj Bhoomi Engineers is a leading Stockists & suppliers of Stainless Steel, Duplex and Super Duplex Steel Plates & Sheets.

Available in a wide range of specifications and thicknesses, plates can be shipped to any destination worldwide.

Plates can be cut to any size or shape as customer require and can also be cut to desired drawings utilizing our high definition plasma machines or by laser cutting.



Specifications :

ASME/ASTM SA/A 240
ASME/ASTM SA/A 167
BS EN10028-7
NACE MR 0175/ISO 15156

Grades

304 / 304L / 316 / 316L / 321 /
321H / 317L / 310S / 309/
31803 / 32750

BOILER QUALITY STEEL PLATES

We offer complete range of Pressure Vessel Steel Plates & Boiler Steel Plates. Boiler Steel Plates are Primarily utilized in the fabrication of boilers for numerous industries. Boiler steel plates covers a number of different grades used in Boilers, Heat exchangers, Pressure vessels, Columns, Storage tanks, Pipelines etc.

Produced to a high quality, our boiler steel plates are ideal for high temperature and high pressure applications. Available ex stock, including cutting and profiling from our extensive global warehousing facilities we can supply plate widths up to 2m to locations worldwide.



Technical Specifications :

ASME/ASTM SA/A 516-60
ASME/ASTM SA/A 516-70
EN10028- P265GH
BS1501-161-430A/B
En10207 P265S
EN10028-3 P275NH



PLATES

ABREX

Raj Bhoomi Engineers stocks and distributes ABREX Plates manufactured by Nippon steel & Sumitomo Metal Corporation, Japan.

The use of abrasion resistance ABREX steel plate markedly reduces the weight of structural members exposed to serve abrasive conditions. Compare with regular steel, ABREX steel plate reduces structural weight and delivers economic merits.

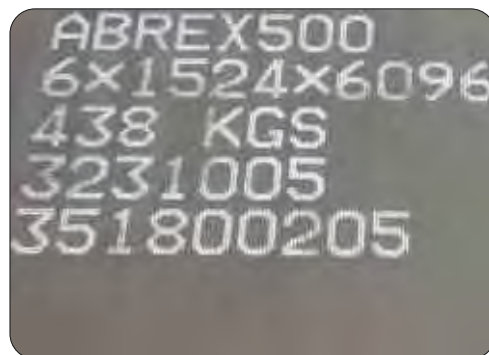
Adoption of high performance abrasion resistant ABREX will prolong the service life of machinery and component.

Thickness : 6mm to 100mm THK



Abrex Plate Applications :

- Dump Truck Liners
- Cutting Edges
- Drag line Bucket Wear Liners
- Screen Plates - Chute Liners
- Conveyor Buckets
- Hoppers
- Ore Scrapers



Type	Designation	Plate Thickness t (mm)	Brinel Hardness (HBW)*1		Charpy Impact Test (L Direction)*2	
			Aiming	Range	Test Temperature (*C)	Absorbed Energy (J)
Standard Type	ABREX 400	6(4.0) ~ 100	400	360~440	—	—
	ABREX 450	6(4.5) ~ 50	450	410~490	—	—
	ABREX 500	6(4.5) ~ 50	500	450~550	—	—
	ABREX 600	6 ~ 25	600	550~650	—	—
Extra Tough Type	ABREX 400LT	6 ~ 60	400	360~440	-40	≥27
	ABREX 450LT	6 ~ 25	450	410~490	-40	≥27
	ABREX 500LT	6 ~ 25	500	450~550	-40	≥21



PLATES

MANGANESE STEEL PLATES

A high manganese, fully austenitic, quench annealed, non magnetic, work-hardening steel with on exceptionally high level of wear resistance when subjected to work-hardening by shock or high impact pressure in service.

The main characteristics is a superior wear resistance :

- Severe wear on the surface has a work-hardening effect on the austenitic structure of this steel.
- This, when combined with the level of carbon in accordance with the international standards, leads to an increase in hardness from 200BHN (in as delivered plate) up to an in-service hardness of at least 600BHN.
- This work-hardening capability renews itself through out in-service life. The underlayers not work-hardened maintain an excellent resistance to shock and a very high ductility.

CHEMICAL ANALYSIS TYPICAL VALUES (% WEIGHT) Mn13

C	Si	Mn	S	P
1.13	0.40	12-14	0.003	0.20

MECHANICAL PROPERTIES

	Hardness HB	Yield Strength	UTS MPa	El%	KCV 20°O (68°P)-J
Typical Values	220	380 (55 KSI)	940 (136 KSI)	40	≥ 112 J (≥ 83 ft. lbs)
Guaranteed Values*	180/245	350 (51 KSI)	800 (116 KSI)	30	64 J (47 ft. lbs)





PIPE

PIPE

Stainless Steel : ASTM A / ASME SA 312 GR. TP 304, 304L, 304H, 309S, 309H, 310S, 310H, 316, 316L, 316Ti, 316H, 316LN, 317, 317L, 321, 321H, 347, 347H, 904L.

Duplex Steel : ASTM A / ASME SA 790 UNS NO S32205 / S32760 / S31803

Carbon Steel : ASTM A / ASME SA 53 GR. A & B, ASTM A / ASME SA 106 GR. A, B & C, API 5L GR.B, API 5L X 42, X46, X52, X56, X60, X65 & X 70, X80 (PSL1 & PSL2) ASTM A / ASME SA 671 / 672 GR 60 CL 12 / 22 / 32

Alloy Steel : ASTM A / ASME SA 335 GR P1, P5, P9, P11, P12, P22, P91, P92, ASTM A / ASME SA 691 Gr. 1 cr, 11/4 cr, 21/4 cr, 5 cr, 9cr

Nickel Alloys : Monel, Nickel, Inconel, Hastelloy, Titanium, Tantalum, Cupro-Nickel

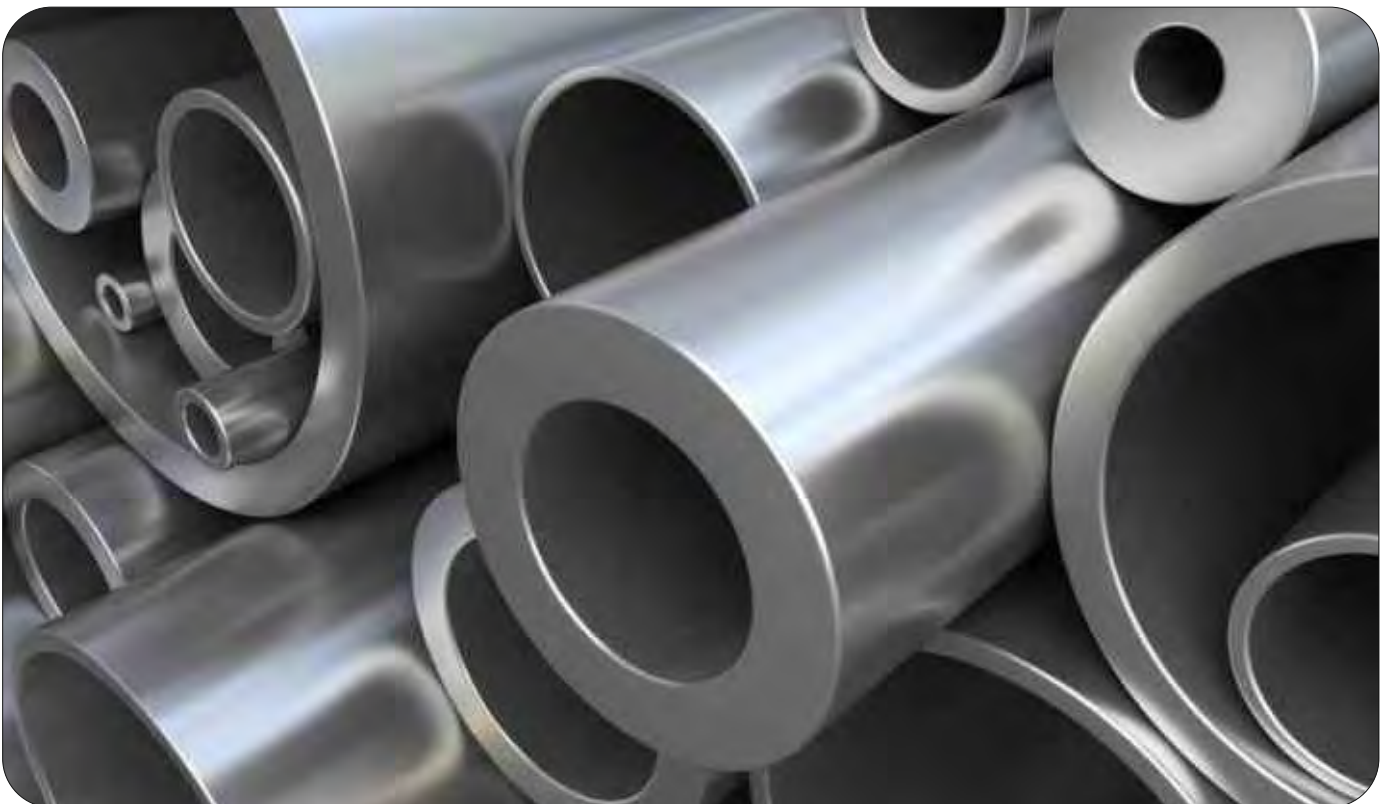
Non-Ferrous : Copper, Bronze, Aluminium, High speed Steel, Zinc, Lead



Type : Round, Square, Rectangular.

Size : 3/8" NB to 24" NB. (Seamless), 1/2" NB to 120" NB. (Welded) ERW / SAW

Wall Thickness : Sch.5S to Sch. XXS & as specified.





• PLATES • FITTINGS • FLANGES • PIPES

FITTINGS

FLANGES

Stainless Steel : ASTM A / ASME SA 182 F304/304L/304H/316/316L/316H/317/317L/321/310/347/904L

Duplex Steel : ASTM A / ASME SA 182 F51/F52/F53/F54/F55/F57/F59/F60/F61

Carbon Steel : ASTM A / ASME SA 105, A694 F42/46/52/56/60/65, A516 Gr. 60/70, IS 2062 (Plate flange)

Alloy Steel : ASTM A / ASME SA 182 F1/F5/F9/F11/F12/F22/F91/F92

Nickel Alloys : Monel, Nickel, Inconel, Hastelloy, Titanium, Tantalum, Cupro-Nickel

Non-Ferrous : Copper, Bronze, Aluminium, High speed Steel, Zinc, Lead

Size : ½" to 100" NB

Class : 150#, 300#, 600#, 900#, 1500# & 2500#



Types

- Slip - On
- Weldneck
- Long Weldneck
- Blind
- Orifice
- Threaded
- Socket Weld
- Lap Joint
- Spectacle Blind
- Deck Flange





• PLATES • FITTINGS • FLANGES • PIPES

FITTINGS

FORGED

Stainless Steel	: ASTM A / ASME SA182 F304/304L/304H/316/ 316L/317 / 317L/321/310/347/904L etc
Duplex Steel	: ASTM A / ASME SA 182 F51/F52/F53/F54/F55/ F57/F59/F60/F61
Carbon Steel	: ASTM A / ASME SA 105, A694 F42/46/52/56/60/ 65/70, A350 LF2/LF3
Alloy Steel	: ASTM A / ASME SA 182 F1/F5/F9/F11/F12/F22/F91/F92
Nickel Alloys	: Monel, Nickel, Inconel, Hastelloy, Titanium, Tantalum, Cupro-Nickel
Non-Ferrous	: Copper, Bronze, Aluminium, High speed Steel, Zinc, Lead
Size	: 1/4" NB TO 6" NB (Socketweld & Threaded)
Class	: 3000#, 6000#, 9000#
Pressure	: 1000#, 2000#, 3000#, 6000#, 9000#



Types

- | | | | | |
|------------|-------------|------------|-------------|----------------|
| • Elbow | • Caps | • Plugs | • Adaptor | • Tee |
| • Union | • Couplings | • Inserts | • Nipples | • Hexagon Nut |
| • Weldolet | • Thredolet | • Sockolet | • Nippolets | • Welding Boss |





FITTINGS

BUTTWELD

Stainless Steel	: ASTM A / ASME SA 403 WP 304 / 304L / 304H / 316 / 316H / 316L / 317 / 317L / 321 / 310 / 347 / 904L ETC.
Duplex	: ASTM A / ASME SA 815 UNS NO S32205/ S32750/S32760
Carbon Steel	: ASTM A / ASME SA 234 WPB, A420 WPL3 / WPL6, MSS-SP-75 WPHY 42 / 46 / 52 / 56 / 60 / 65 / 70
Alloy Steel	: ASTM A / ASME SA 234 WP1 / WP5 / WP11 / WP12 / WP22 / Wp91 / WP92
Nickel Alloy	: Monel, Nickel, Inconel, Hastelloy, Titanium, Tantalum, Cupro-Nickel
Non-Ferrous	: Copper, Bronze, Aluminium, High speed Steel, Zinc, Lead
Size	: 1/4" NB TO 48" NB (Seamless & Welded)
Wall Thickness	: Sch. 5S To Sch. XXS. & as specified



Types

- Elbow (long/short)
- Tee (equal & reducing)
- Reducer (concentric & eccentric)
- Swage Nipple
- Bends
- Stub-End
- Coupling
- Plug & union
- Cap





RAJ BHOOMI ENGINEERS

HEAD OFFICE :

2 Cross Lane, Jj Bldg
Opp 5th Khetwadi Back Road, MUMBAI-400004

CONTACT US :

+91-9920809853
+91-9594493193

EMAIL ID :

sales@rajbhoomi.com
export@rajbhoomi.com

FACTORY ADDRESS :

Plot N. 4/A & 12 | Citizen Industrial Estate |
Azad Nagar Golani | Vasai East - 401208 |
Maharashtra - India.